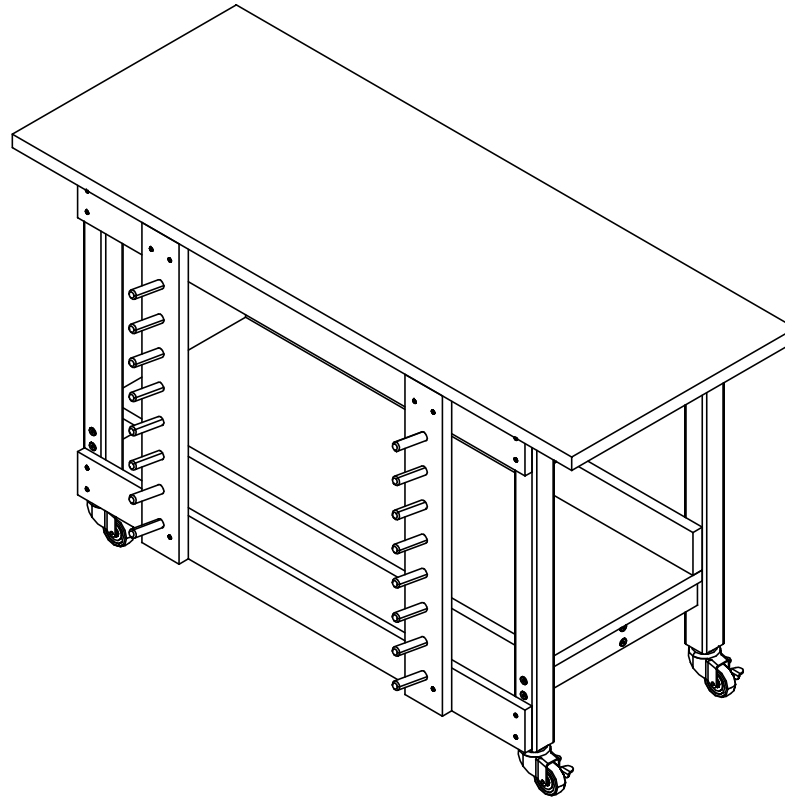


GLUE AND STAIN BENCH

GSB-6024 & MGSB-6024
ASSEMBLY INSTRUCTIONS



NOTE:

1. MODEL VIEWS MAY NOT REPRESENT EXACT MODEL PURCHASED

ALL DIMENSIONS ARE IN INCHES UNLESS NOTED OTHERWISE	DWN BY: EMR	DATE DWN: 11/11/14
DECIMALS: $\frac{1}{8}$ = $\pm .030$	APR BY:	DATE APR:
XX = $\pm .020$	APR BY:	DATE APR:
.XXX = $\pm .010$	APR BY:	DATE APR:
ANGLES: $\pm 1^\circ$	APR BY:	DATE APR:
CABINET SQUARENESS: $\pm .0625$	APR BY:	DATE APR:

CONFIDENTIAL:
ALL DESIGN RIGHTS RESERVED
THE INFORMATION, DATA, DESIGN, AND DRAWINGS EMBODIED IN THIS DOCUMENT AND ALL REPRODUCTIONS THEREOF ARE THE EXCLUSIVE PROPERTY OF DIVERSIFIED WOODCRAFTS, INC.

THESE DOCUMENTS ARE SUPPLIED WITH THE UNDERSTANDING THAT THEY WILL NOT BE DISCLOSED TO THIRD PARTIES WITHOUT WRITTEN CONSENT OF DIVERSIFIED WOODCRAFTS, INC. ANY REPRODUCTION IN PART OR WHOLE WITHOUT WRITTEN CONSENT IS SUBJECT TO LEGAL ACTION.



300 South Krueger Street
Suring, WI 54174
diversifiedwoodcrafts.com

TITLE:
GLUE AND STAIN BENCH
ASSEMBLY INSTRUCTIONS

REV.	DESCRIPTION	DATE	NAME	ECN NO.
A	CREATED ASSEMBLY INSTRUCTIONS	11/11/14	EMR	-
REVISION LEVEL				

DRAWING NUMBER:

GSB-6024 & MGSB-6024

SCALE:

NTS

SHEET:

1 OF 11

REVISION:

REV A

TOOLS REQUIRED

½" WRENCH
½" SOCKET AND TORQUE WRENCH - OPTIONAL
4MM ALLEN WRENCH
SCREW DRIVER

ASSEMBLY COMPONENTS


ITEMS INCLUDED	PART #	PART DESCRIPTION	QTY
TOP AND APRON ASSEMBLY	N/A	TOP ASSEMBLY (FACTORY ASSEMBLED)	1
LEGS	501103	LEG,MPL 2.25X2.25X32.25	4
LEG HARDWARE	520001-4	LEG HARDWARE KIT, 4 LEGS	1
LEG BRACE	N/A	LEG BRACE - 16.00" LONG	2
STRETCHER	N/A	STRETCHER - 45.50" LONG	1
SHELF	N/A	SHELF - 1.00"THK X 16.00"W X 48.00"L	1
BACKSPLASH	N/A	BACKSPLASH - 1.00"THK X 4.00"W X 48.00"L	1
CLAMP FRAME - TOP & BOTTOM	N/A	HORIZONTAL PIECE - 0.75"THK X 4.00"W X 48.00"L	2
CLAMP FRAME - SIDES	N/A	VERTICAL PIECE - 1.00"THK X 4.00"W X 29.75"L	2
CONFIRMATS - LEGS	227578	SCREW,7MMX90MM,CONN,ALLENHEAD, BLACK	8
CONFIRMATS - STRETCHERS	228564	SCREW,7MMX50MM,CONN,ALLENHEAD, BLACK	4
SCREWS - SHELF AND BACKSPLASH	100597	SCREW,#8X1.5 QUAD ROUND WASHER	11
SCREWS - FRAME	100066	SCREW,#8X1.5 FSQ SMS TYPE 17	16
LEGS WITH CASTERS	501103	LEG,MPL 2.25X2.25X35	4

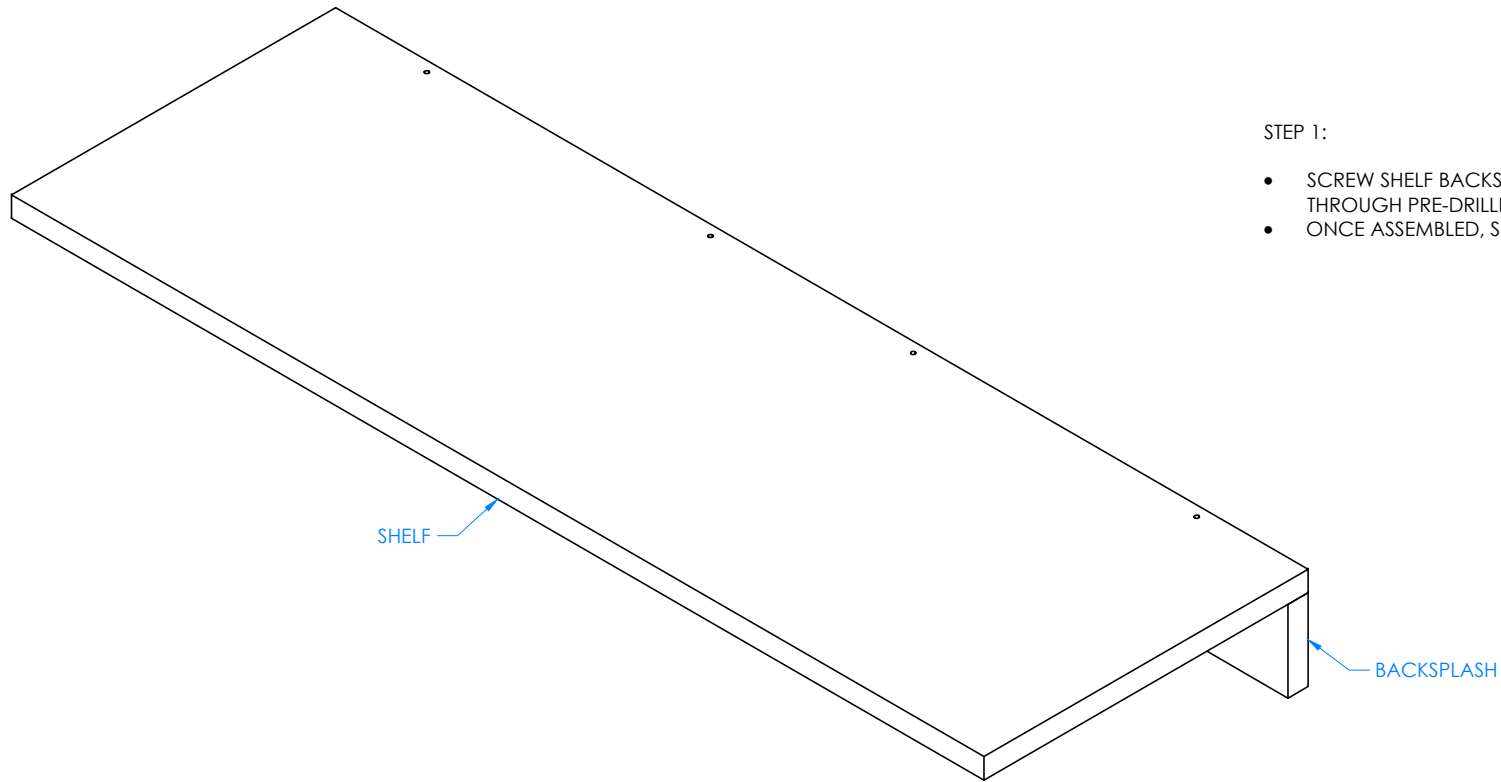
NOTE:

1. **XX** INDICATES ITEMS ONLY USED FOR THE MGSB-6024.

A	CREATED ASSEMBLY INSTRUCTIONS	11/11/14	EMR	-
REV.	DESCRIPTION	DATE	NAME	ECN NO.
	REVISION LEVEL			

ALL DIMENSIONS ARE IN INCHES UNLESS NOTED OTHERWISE DECIMALS: .X = ± .030 .XX = ± .020 .XXX = ± .010 ANGLES: = ± 1° CABINET SQUARENESS: = ± .0625	DWN BY: EMR APR BY: APR BY:	DATE DWN: 11/11/14 DATE APR: DATE APR:
CONFIDENTIAL: ALL DESIGN RIGHTS RESERVED THE INFORMATION, DATA, DESIGN, AND DRAWINGS EMBODIED IN THIS DOCUMENT AND ALL REPRODUCTIONS THEREOF ARE THE EXCLUSIVE PROPERTY OF DIVERSIFIED WOODCRAFTS, INC.		
THESE DOCUMENTS ARE SUPPLIED WITH THE UNDERSTANDING THAT THEY WILL NOT BE DISCLOSED TO THIRD PARTIES WITHOUT WRITTEN CONSENT OF DIVERSIFIED WOODCRAFTS, INC. ANY REPRODUCTION IN PART OR WHOLE WITHOUT WRITTEN CONSENT IS SUBJECT TO LEGAL ACTION.		

	300 South Krueger Street Suring, WI 54174 diversifiedwoodcrafts.com		
	TITLE: GLUE AND STAIN BENCH TOOLS AND ASSEMBLY COMPONENTS		
DRAWING NUMBER:		SCALE:	SHEET:
GSB-6024 & MGSB-6024		NTS	2 OF 11
		REVISION:	REV A



STEP 1:

- SCREW SHELF BACKSPLASH ONTO SHELF BY GOING THROUGH PRE-DRILLED HOLES ON BACKSIDE OF SHELF.
- ONCE ASSEMBLED, SET ASIDE.

SHELF

BACKSPLASH

UNDERSIDE OF SHELF SHOWN

NOTE:

1.

ALL DIMENSIONS ARE IN INCHES UNLESS NOTED OTHERWISE
 DECIMALS: $\frac{1}{8} = \pm .030$
 $\frac{1}{4} = \pm .020$
 $\frac{3}{8} = \pm .010$
 ANGLES: $\pm 1^\circ$
 CABINET SQUARENESS: $\pm .0625$

DWN BY:	EMR	DATE DWN:	11/11/14
APR BY:		DATE APR:	
APR BY:		DATE APR:	

CONFIDENTIAL:
 ALL DESIGN RIGHTS RESERVED
 THE INFORMATION, DATA, DESIGN, AND DRAWINGS EMBODIED IN THIS DOCUMENT AND ALL REPRODUCTIONS THEREOF ARE THE EXCLUSIVE PROPERTY OF DIVERSIFIED WOODCRAFTS, INC.

THESE DOCUMENTS ARE SUPPLIED WITH THE UNDERSTANDING THAT THEY WILL NOT BE DISCLOSED TO THIRD PARTIES WITHOUT WRITTEN CONSENT OF DIVERSIFIED WOODCRAFTS, INC. ANY REPRODUCTION IN PART OR WHOLE WITHOUT WRITTEN CONSENT IS SUBJECT TO LEGAL ACTION.



300 South Krueger Street
 Suring, WI 54174
diversifiedwoodcrafts.com

TITLE:
 GLUE AND STAIN BENCH
 ASSEMBLY INSTRUCTIONS

DRAWING NUMBER:

GSB-6024 & MGSB-6024

SCALE:

NTS

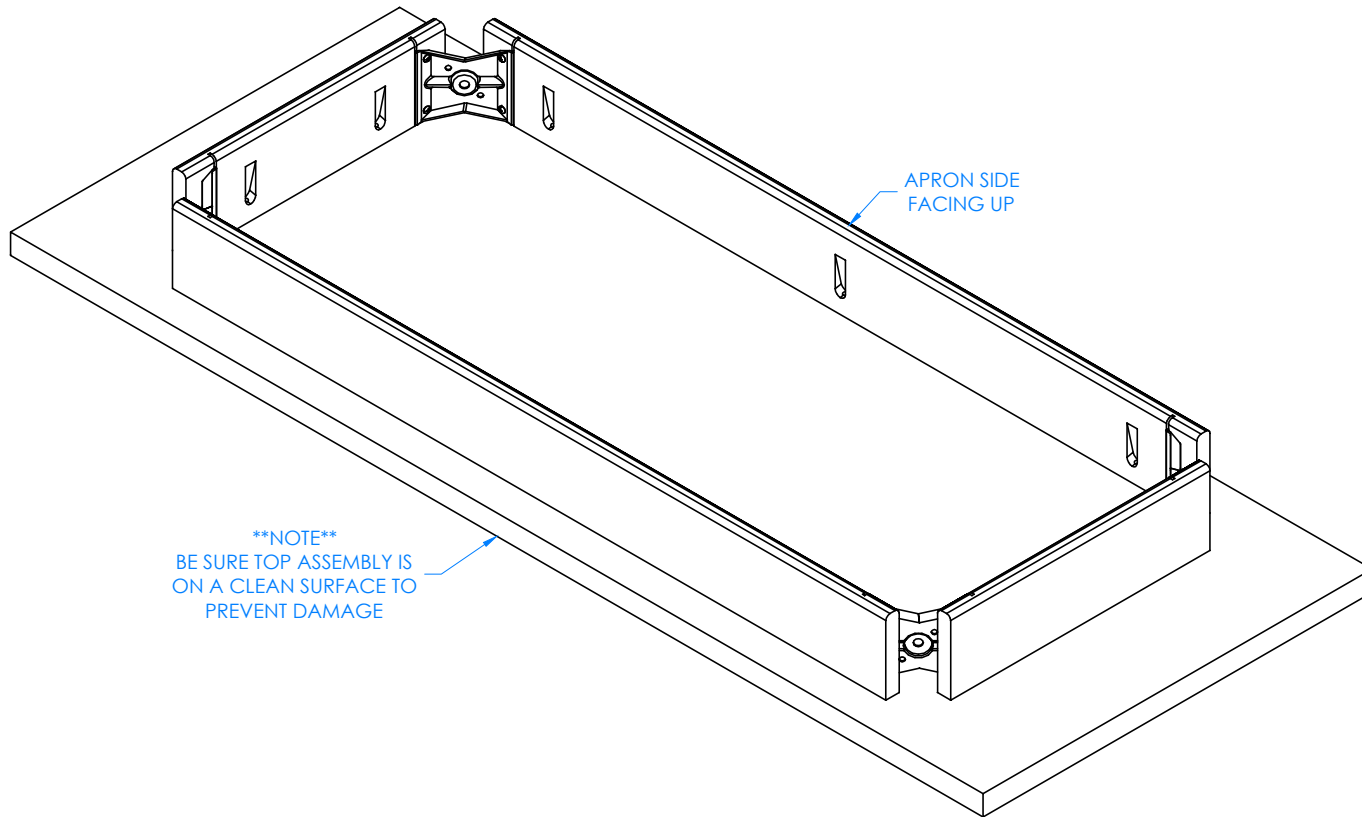
SHEET:

3 OF 11

REVISION:

REV A

A	CREATED ASSEMBLY INSTRUCTIONS	11/11/14	EMR	-
REV.	DESCRIPTION	DATE	NAME	ECN NO.
REVISION LEVEL				



STEP 2:

- LAY TOP ASSEMBLY ON FLOOR WITH APRON SIDE FACING UP.

NOTE:

1.

A	CREATED ASSEMBLY INSTRUCTIONS	11/11/14	EMR	-
REV.	DESCRIPTION	DATE	NAME	ECN NO.
REVISION LEVEL				

ALL DIMENSIONS ARE IN INCHES UNLESS NOTED OTHERWISE
 DECIMALS: $\frac{1}{8} = \pm .030$
 $\frac{1}{4} = \pm .020$
 $\frac{3}{8} = \pm .010$
 ANGLES: $\pm 1^\circ$
 CABINET SQUARENESS: $\pm .0625$

CONFIDENTIAL:
 ALL DESIGN RIGHTS RESERVED
 THE INFORMATION, DATA, DESIGN, AND DRAWINGS EMBODIED IN THIS DOCUMENT AND ALL REPRODUCTIONS THEREOF ARE THE EXCLUSIVE PROPERTY OF DIVERSIFIED WOODCRAFTS, INC.

THESE DOCUMENTS ARE SUPPLIED WITH THE UNDERSTANDING THAT THEY WILL NOT BE DISCLOSED TO THIRD PARTIES WITHOUT WRITTEN CONSENT OF DIVERSIFIED WOODCRAFTS, INC. ANY REPRODUCTION IN PART OR WHOLE WITHOUT WRITTEN CONSENT IS SUBJECT TO LEGAL ACTION.



300 South Krueger Street
 Suring, WI 54174
diversifiedwoodcrafts.com

TITLE:
 GLUE AND STAIN BENCH
 ASSEMBLY INSTRUCTIONS

DRAWING NUMBER:

GSB-6024 & MGSB-6024

SCALE:

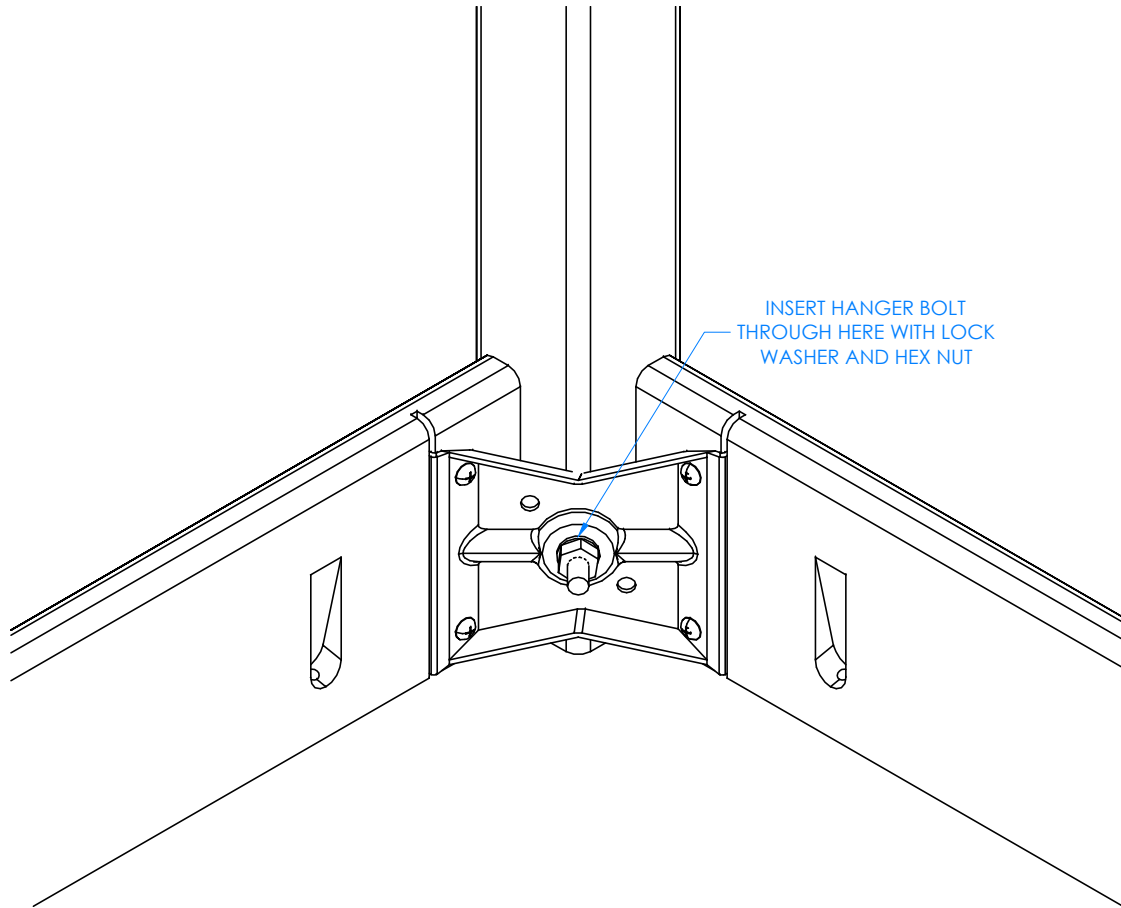
NTS

SHEET:

4 OF 11

REVISION:

REV A



CLOSE UP OF CORNER LEG ASSEMBLY

NOTE:

1.

STEP 3:

- INSERT HANGER BOLT ON ONE LEG THROUGH THE CORNER BRACKET AND INSERT LOCK WASHER AND HEX NUT.
- SCREW ON THE NUT USING $\frac{1}{2}$ " WRENCH OR $\frac{1}{2}$ " SOCKET AND TORQUE WRENCH.
- DO NOT TIGHTEN ALL THE WAY.
- REPEAT FOR OTHER LEGS.

ALL DIMENSIONS ARE IN INCHES UNLESS NOTED OTHERWISE	DWN BY:	EMR	DATE DWN:	11/11/14
DECIMALS: $\frac{1}{8}$ = $\pm .030$	APR BY:		DATE APR:	
XX = $\pm .020$	APR BY:		DATE APR:	
.XXX = $\pm .010$	APR BY:		DATE APR:	
ANGLES: = $\pm 1^{\circ}0'$	APR BY:		DATE APR:	
CABINET SQUARENESS: = $\pm .0625$	APR BY:		DATE APR:	

CONFIDENTIAL:
ALL DESIGN RIGHTS RESERVED
THE INFORMATION, DATA, DESIGN, AND DRAWINGS EMBODIED IN THIS DOCUMENT AND ALL REPRODUCTIONS THEREOF ARE THE EXCLUSIVE PROPERTY OF DIVERSIFIED WOODCRAFTS, INC.

THESE DOCUMENTS ARE SUPPLIED WITH THE UNDERSTANDING THAT THEY WILL NOT BE DISCLOSED TO THIRD PARTIES WITHOUT WRITTEN CONSENT OF DIVERSIFIED WOODCRAFTS, INC. ANY REPRODUCTION IN PART OR WHOLE WITHOUT WRITTEN CONSENT IS SUBJECT TO LEGAL ACTION.



300 South Krueger Street
Suring, WI 54174
diversifiedwoodcrafts.com

TITLE:
GLUE AND STAIN BENCH
ASSEMBLY INSTRUCTIONS

A	CREATED ASSEMBLY INSTRUCTIONS	11/11/14	EMR	-
REV.	DESCRIPTION	DATE	NAME	ECN NO.

REVISION LEVEL

DRAWING NUMBER:

GSB-6024 & MGSB-6024

SCALE:

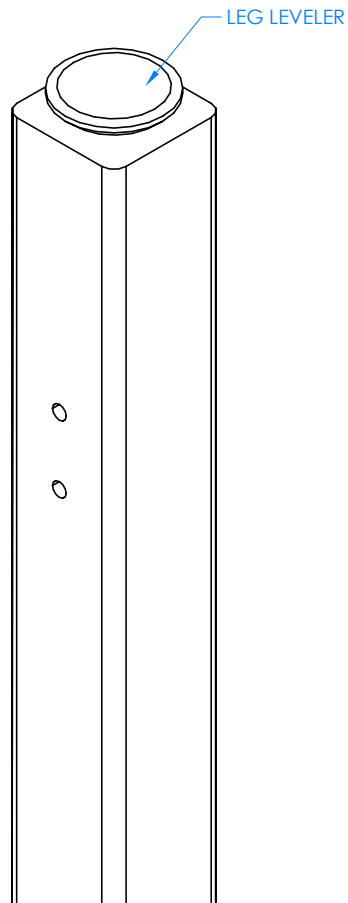
NTS

SHEET:

5 OF 11

REVISION:

REV A



CLOSE UP OF LEG LEVELER ASSEMBLY

STEP 4:

- IF YOUR TABLE HAS CASTERS SKIP TO STEP 5.
- SCREW LEG LEVELERS INTO T-NUT ON BOTTOM OF LEG.

NOTE:

1.

ALL DIMENSIONS ARE IN INCHES UNLESS NOTED OTHERWISE	DWN BY:	EMR	DATE DWN:	11/11/14
DECIMALS: $\frac{1}{16}$ = $\pm .030$	APR BY:		DATE APR:	
XX = $\pm .020$	APR BY:		DATE APR:	
XXX = $\pm .010$	APR BY:		DATE APR:	
ANGLES: $\pm 1^\circ$	APR BY:		DATE APR:	
CABINET SQUARENESS: $\pm .0625$	APR BY:		DATE APR:	

CONFIDENTIAL:
ALL DESIGN RIGHTS RESERVED
THE INFORMATION, DATA, DESIGN, AND DRAWINGS EMBODIED IN THIS DOCUMENT AND ALL REPRODUCTIONS THEREOF ARE THE EXCLUSIVE PROPERTY OF DIVERSIFIED WOODCRAFTS, INC.

THESE DOCUMENTS ARE SUPPLIED WITH THE UNDERSTANDING THAT THEY WILL NOT BE DISCLOSED TO THIRD PARTIES WITHOUT WRITTEN CONSENT OF DIVERSIFIED WOODCRAFTS, INC. ANY REPRODUCTION IN PART OR WHOLE WITHOUT WRITTEN CONSENT IS SUBJECT TO LEGAL ACTION.

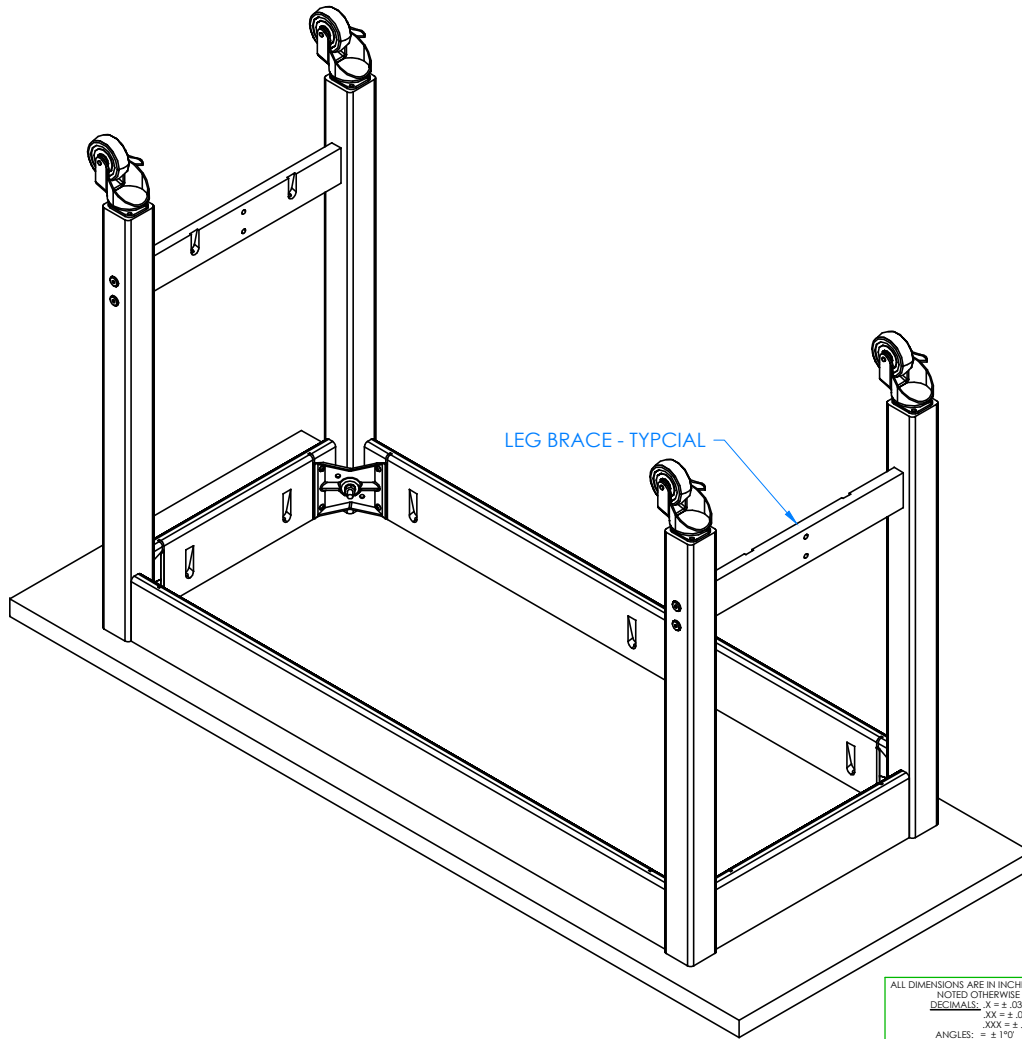


300 South Krueger Street
Suring, WI 54174
diversifiedwoodcrafts.com

TITLE:
GLUE AND STAIN BENCH
ASSEMBLY INSTRUCTIONS

REV.	DESCRIPTION	DATE	NAME	ECN NO.
A	CREATED ASSEMBLY INSTRUCTIONS	11/11/14	EMR	-
REVISION LEVEL				

DRAWING NUMBER:	SCALE:	SHEET:	REVISION:
GSB-6024 & MGSB-6024	NTS	6 OF 11	REV A



STEP 5:

- ATTACH BRACES TO LEGS.
- INSERT CONFIRMATS INTO ONE LEG AND SCREW INTO BRACE.
- REPEAT ON ALL LEGS.
- MAKE SURE BRACES ARE STRAIGHT AND ALL CONFIRMATS ARE SECURE.

NOTE:

1.

ALL DIMENSIONS ARE IN INCHES UNLESS NOTED OTHERWISE	DWN BY:	EMR	DATE DWN:	11/11/14
DECIMALS: .X = ± .030	APR BY:		DATE APR:	
.XX = ± .020	BY:		DATE APR:	
.XXX = ± .010	BY:		DATE APR:	
ANGLES: = ± 1°	BY:		DATE APR:	
CABINET SQUARENESS: = ± .0625	BY:		DATE APR:	

CONFIDENTIAL:
ALL DESIGN RIGHTS RESERVED
THE INFORMATION, DATA, DESIGN, AND DRAWINGS EMBODIED IN THIS DOCUMENT AND ALL REPRODUCTIONS THEREOF ARE THE EXCLUSIVE PROPERTY OF DIVERSIFIED WOODCRAFTS, INC.

THESE DOCUMENTS ARE SUPPLIED WITH THE UNDERSTANDING THAT THEY WILL NOT BE DISCLOSED TO THIRD PARTIES WITHOUT WRITTEN CONSENT OF DIVERSIFIED WOODCRAFTS, INC. ANY REPRODUCTION IN PART OR WHOLE WITHOUT WRITTEN CONSENT IS SUBJECT TO LEGAL ACTION.



300 South Krueger Street
Suring, WI 54174
diversifiedwoodcrafts.com

TITLE:
GLUE AND STAIN BENCH
ASSEMBLY INSTRUCTIONS

REV.	DESCRIPTION	DATE	NAME	ECN NO.
A	CREATED ASSEMBLY INSTRUCTIONS	11/11/14	EMR	-
REVISION LEVEL				

DRAWING NUMBER:

GSB-6024 & MGSB-6024

SCALE:

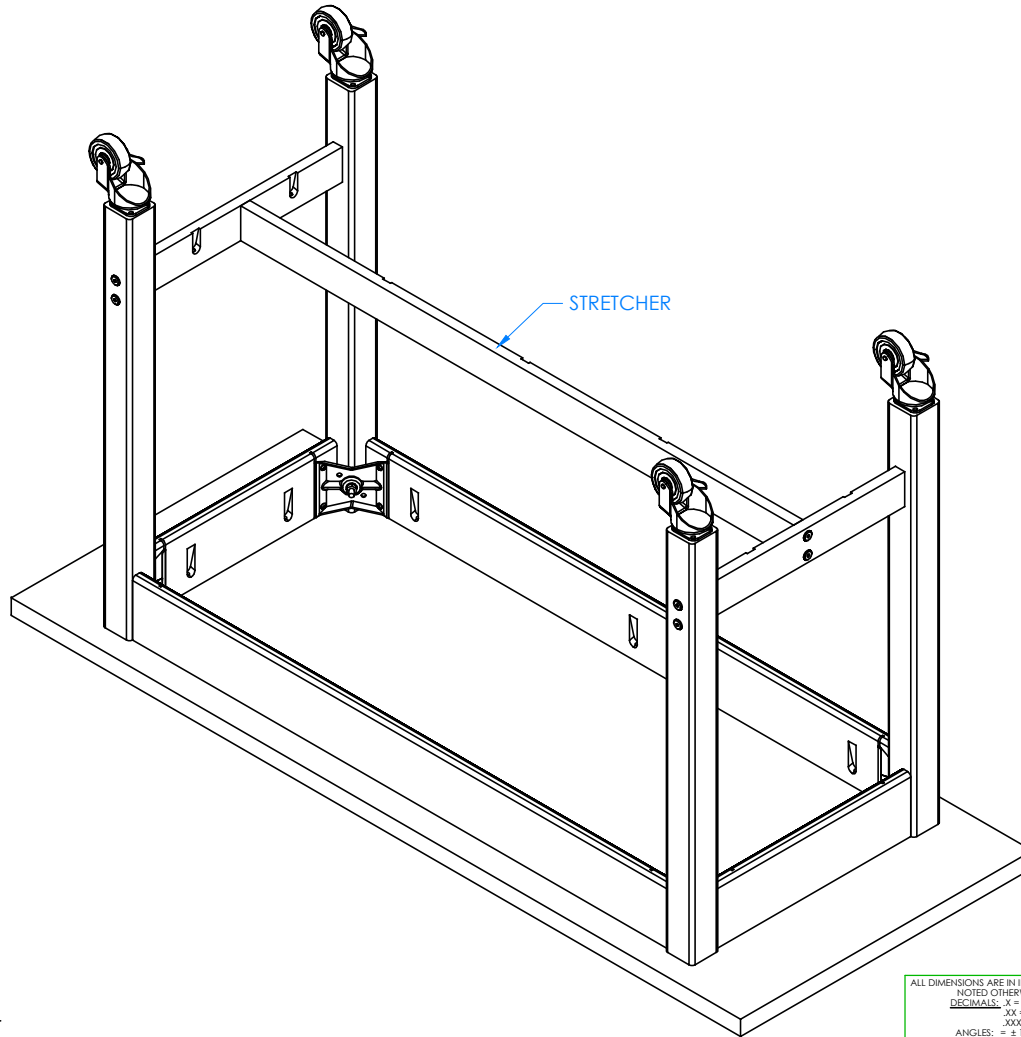
NTS

SHEET:

7 OF 11

REVISION:

REV A

**NOTE:**

1.

STEP 6:

- INSERT STRETCHER IN BETWEEN LEG BRACES.
- ATTACH STRETCHER WITH HARDWARE PROVIDED.
- GO BACK TO STEP 3 AND TIGHTEN UP THE HANGER BOLTS FOR EACH LEG USING A $\frac{1}{2}$ " WRENCH OR $\frac{1}{2}$ " SOCKET AND TORQUE WRENCH, TO A MINIMUM OF 12FT LBS BUT NOT TO EXCEED 17FT LBS.

ALL DIMENSIONS ARE IN INCHES UNLESS NOTED OTHERWISE	DWN BY:	EMR	DATE DWN:	11/11/14
DECIMALS: $\frac{1}{8}$ = ± .030	APR BY:		DATE APR:	
$\frac{1}{4}$ = ± .020	APR BY:		DATE APR:	
$\frac{3}{8}$ = ± .010	APR BY:		DATE APR:	
ANGLES: = ± 1°	APR BY:		DATE APR:	
CABINET SQUARENESS: = ± .0625	APR BY:		DATE APR:	

CONFIDENTIAL:
ALL DESIGN RIGHTS RESERVED
THE INFORMATION, DATA, DESIGN, AND DRAWINGS EMBODIED IN THIS DOCUMENT AND ALL REPRODUCTIONS THEREOF ARE THE EXCLUSIVE PROPERTY OF DIVERSIFIED WOODCRAFTS, INC.

THESE DOCUMENTS ARE SUPPLIED WITH THE UNDERSTANDING THAT THEY WILL NOT BE DISCLOSED TO THIRD PARTIES WITHOUT WRITTEN CONSENT OF DIVERSIFIED WOODCRAFTS, INC. ANY REPRODUCTION IN PART OR WHOLE WITHOUT WRITTEN CONSENT IS SUBJECT TO LEGAL ACTION.

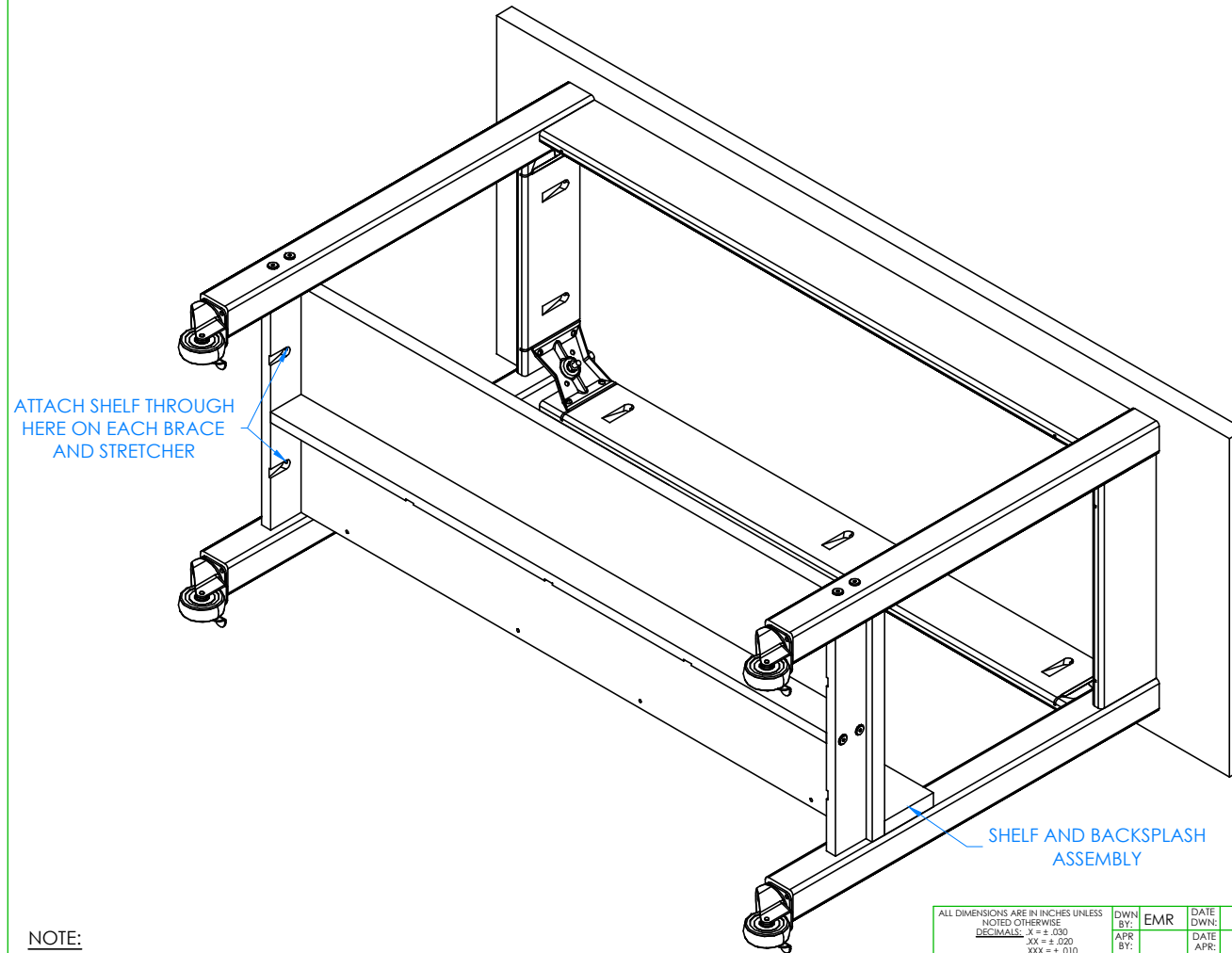


300 South Krueger Street
Suring, WI 54174
diversifiedwoodcrafts.com

TITLE:
GLUE AND STAIN BENCH
ASSEMBLY INSTRUCTIONS

REV.	DESCRIPTION	DATE	NAME	ECN NO.
A	CREATED ASSEMBLY INSTRUCTIONS	11/11/14	EMR	-
REVISION LEVEL				

DRAWING NUMBER:	SCALE:	SHEET:	REVISION:
GSB-6024 & MGSB-6024	NTS	8 OF 11	REV A



STEP 7:

- WITH HELP FROM ANOTHER PERSON, TIP TABLE ON ITS SIDE.
- ATTACH SHELF AND BACKSPLASH ASSEMBLY TO BRACES AND STRETCHER WITH HARDWARE PROVIDED.

NOTE:

1.

REV.	DESCRIPTION	DATE	NAME	ECN NO.
A	CREATED ASSEMBLY INSTRUCTIONS	11/11/14	EMR	-
REVISION LEVEL				

ALL DIMENSIONS ARE IN INCHES UNLESS NOTED OTHERWISE
 DECIMALS: $\frac{1}{8}$ = $\pm .030$
 $\frac{1}{4}$ = $\pm .020$
 $\frac{3}{8}$ = $\pm .010$
 ANGLES: $\pm 1^\circ$
 CABINET SQUARENESS: $\pm .0625$

CONFIDENTIAL:
 ALL DESIGN RIGHTS RESERVED
 THE INFORMATION, DATA, DESIGN, AND DRAWINGS EMBODIED IN THIS DOCUMENT AND ALL REPRODUCTIONS THEREOF ARE THE EXCLUSIVE PROPERTY OF DIVERSIFIED WOODCRAFTS, INC.

THESE DOCUMENTS ARE SUPPLIED WITH THE UNDERSTANDING THAT THEY WILL NOT BE DISCLOSED TO THIRD PARTIES WITHOUT WRITTEN CONSENT OF DIVERSIFIED WOODCRAFTS, INC. ANY REPRODUCTION IN PART OR WHOLE WITHOUT WRITTEN CONSENT IS SUBJECT TO LEGAL ACTION.

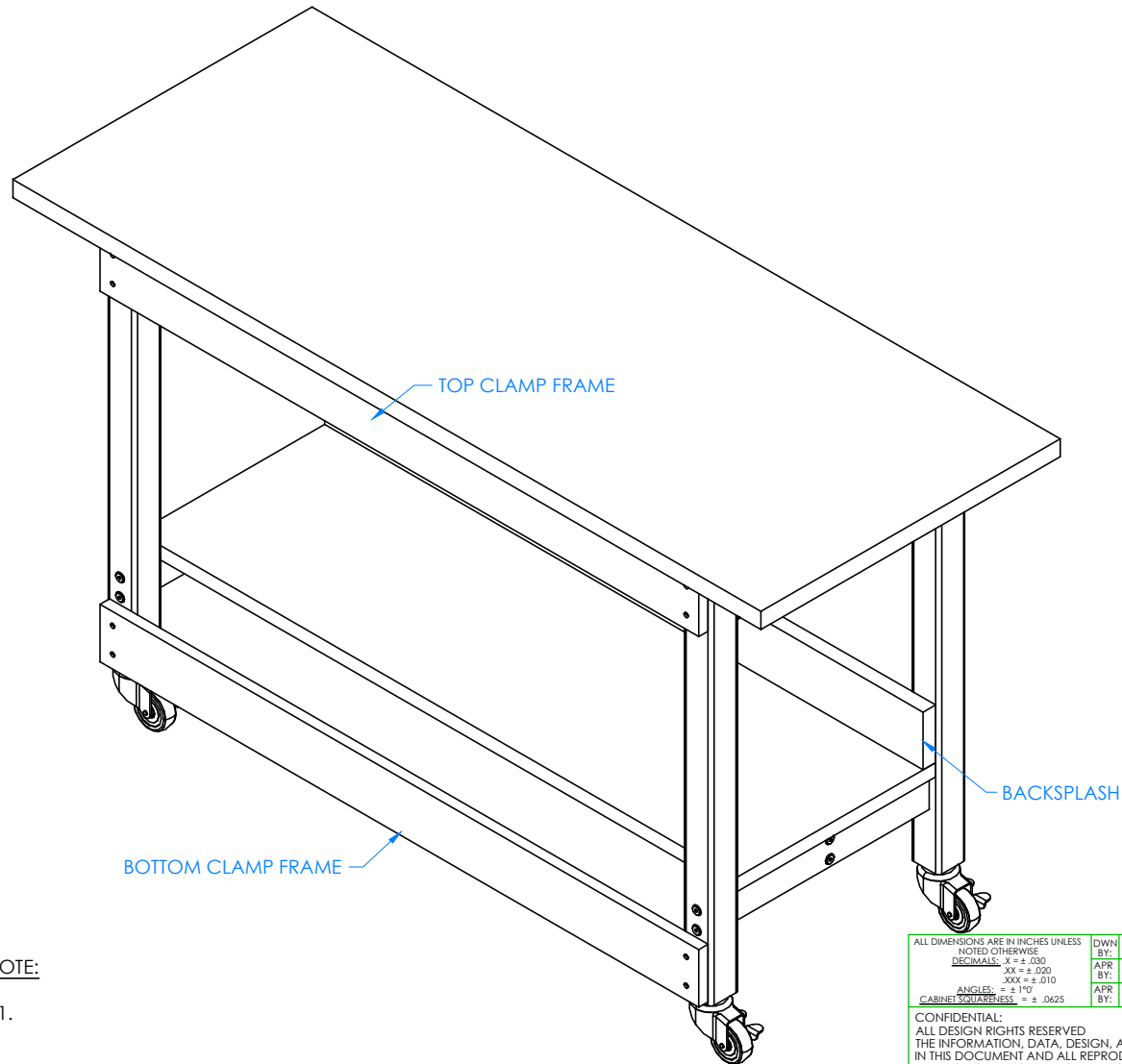
DWN BY: EMR DATE DWN: 11/11/14
 APR BY: DATE APR:
 APR BY: DATE APR:



300 South Krueger Street
 Suring, WI 54174
diversifiedwoodcrafts.com

TITLE:
 GLUE AND STAIN BENCH
 ASSEMBLY INSTRUCTIONS

DRAWING NUMBER:	SCALE:	SHEET:	REVISION:
GSB-6024 & MGSB-6024	NTS	9 OF 11	REV A



STEP 8:

- WITH HELP FROM ANOTHER PERSON, TIP TABLE UP.
- SCREW ON TOP AND BOTTOM OF CLAMP FRAME TO LEGS ON FRONT SIDE OF TABLE (OPPOSITE SIDE OF BACKSPLASH) WITH HARDWARE PROVIDED.

NOTE:

1.

ALL DIMENSIONS ARE IN INCHES UNLESS NOTED OTHERWISE	DWN BY:	EMR	DATE DWN:	11/11/14
DECIMALS: .X = ± .030	APR BY:		DATE APR:	
.XX = ± .020	APR BY:		DATE APR:	
.XXX = ± .010	APR BY:		DATE APR:	
ANGLES: = ± 1°	APR BY:		DATE APR:	
CABINET SQUARENESS: = ± .0625	APR BY:		DATE APR:	

CONFIDENTIAL:
ALL DESIGN RIGHTS RESERVED
THE INFORMATION, DATA, DESIGN, AND DRAWINGS EMBODIED IN THIS DOCUMENT AND ALL REPRODUCTIONS THEREOF ARE THE EXCLUSIVE PROPERTY OF DIVERSIFIED WOODCRAFTS, INC.

THESE DOCUMENTS ARE SUPPLIED WITH THE UNDERSTANDING THAT THEY WILL NOT BE DISCLOSED TO THIRD PARTIES WITHOUT WRITTEN CONSENT OF DIVERSIFIED WOODCRAFTS, INC. ANY REPRODUCTION IN PART OR WHOLE WITHOUT WRITTEN CONSENT IS SUBJECT TO LEGAL ACTION.



300 South Krueger Street
Suring, WI 54174
diversifiedwoodcrafts.com

TITLE:
GLUE AND STAIN BENCH
ASSEMBLY INSTRUCTIONS

REV.	DESCRIPTION	DATE	NAME	ECN NO.
A	CREATED ASSEMBLY INSTRUCTIONS	11/11/14	EMR	-
REVISION LEVEL				

DRAWING NUMBER:

GSB-6024 & MGSB-6024

SCALE:

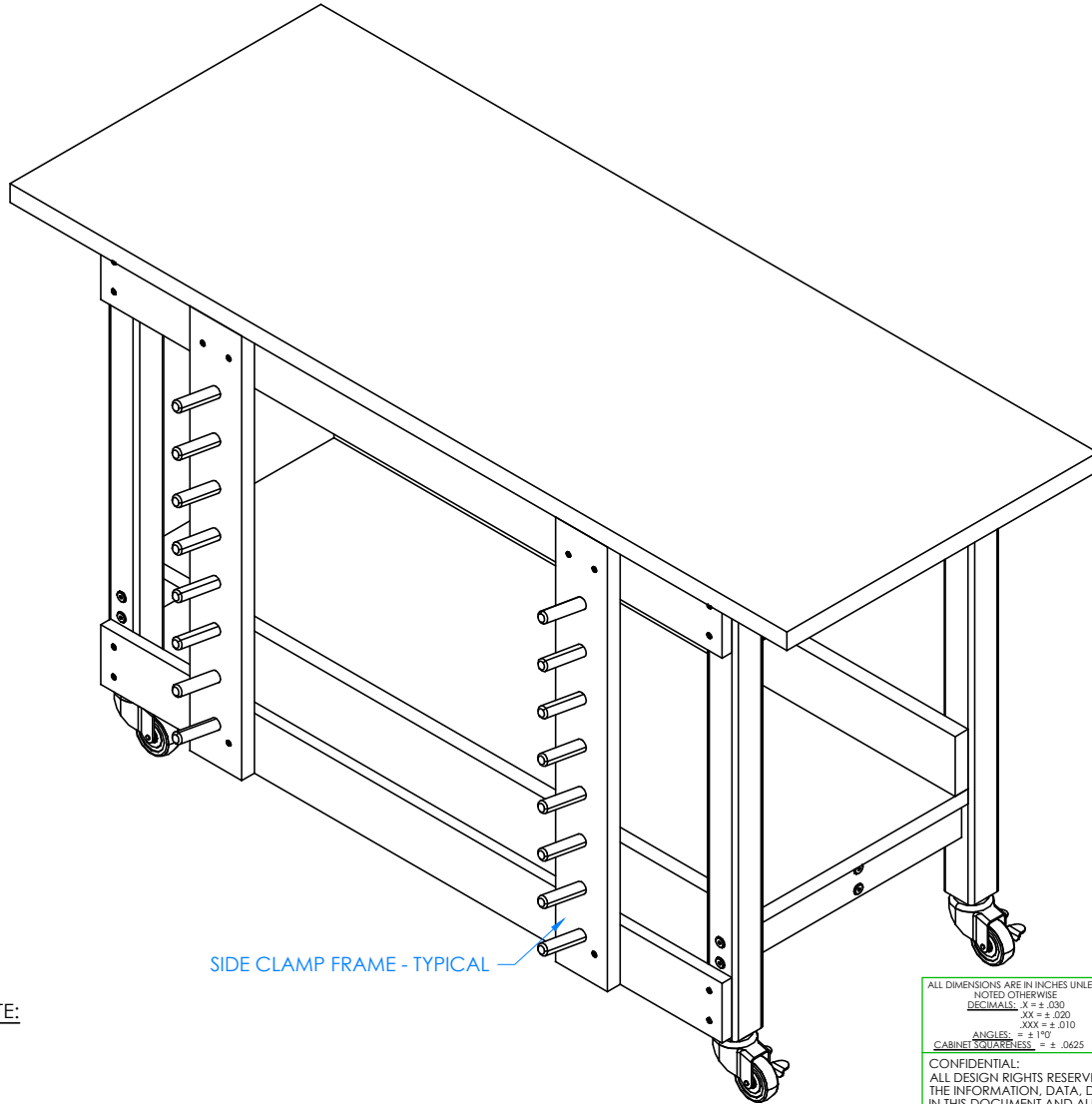
NTS

SHEET:

10 OF 11

REVISION:

REV A



NOTE:

1.

COMPLETE UNIT SHOWN

A	CREATED ASSEMBLY INSTRUCTIONS	11/11/14	EMR	-
REV.	DESCRIPTION	DATE	NAME	ECN NO.
	REVISION LEVEL			

STEP 9:

- ATTACH SIDES OF CLAMP FRAME TO TOP AND BOTTOM FRAME WITH HARDWARE PROVIDED.
- SET TABLE IN PLACE.
- IF YOUR TABLE HAS LEG LEVELERS, ADJUST LEVELERS TO LEVEL TABLE.

ALL DIMENSIONS ARE IN INCHES UNLESS NOTED OTHERWISE	DWN BY:	EMR	DATE DWN:	11/11/14
DECIMALS: $\frac{1}{8}$ = $\pm .030$	APR BY:		DATE APR:	
$\frac{1}{4}$ = $\pm .020$	APR BY:		DATE APR:	
$\frac{3}{8}$ = $\pm .010$	APR BY:		DATE APR:	
ANGLES: $\pm 1^{\circ}$	APR BY:		DATE APR:	
CABINET SQUARENESS: $\pm .0625$	APR BY:		DATE APR:	

CONFIDENTIAL:
ALL DESIGN RIGHTS RESERVED
THE INFORMATION, DATA, DESIGN, AND DRAWINGS EMBODIED IN THIS DOCUMENT AND ALL REPRODUCTIONS THEREOF ARE THE EXCLUSIVE PROPERTY OF DIVERSIFIED WOODCRAFTS, INC.

THESE DOCUMENTS ARE SUPPLIED WITH THE UNDERSTANDING THAT THEY WILL NOT BE DISCLOSED TO THIRD PARTIES WITHOUT WRITTEN CONSENT OF DIVERSIFIED WOODCRAFTS, INC. ANY REPRODUCTION IN PART OR WHOLE WITHOUT WRITTEN CONSENT IS SUBJECT TO LEGAL ACTION.



300 South Krueger Street
Suring, WI 54174
diversifiedwoodcrafts.com

TITLE:
GLUE AND STAIN BENCH
ASSEMBLY INSTRUCTIONS

DRAWING NUMBER:

GSB-6024 & MGSB-6024

SCALE:

NTS

SHEET:

11 OF 11

REVISION:

REV A